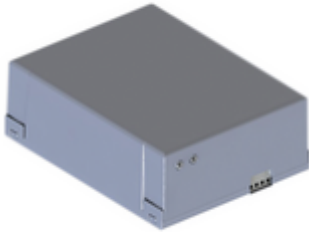


KBP



Article

Item no.	Description
178392	KBP Battery backup, 1.3 Ah, for installation in a control housing

Scope of delivery

- Battery unit with integrated charge controller
- Connection cable

Use

- For CBX10224(F)(Parc PA only), CBX20224L and CBX20224H

Technical data

- Connection type: Pluggable
- Inputs:
 - 1 common entrance and exit for loading and supply
- Outputs:
 - 1 common entrance and exit for loading and supply
- Protection class: IP20
- Temperature (min.)[°C]: -15
- Temperature (max.)[°C]: 45
- Temperature (min./max.)[°C]: -15/45
- Temperature (min.)[°F]: 5

- Temperature (max.) [°F]: 113
- Operating voltage [V]: 24 V-DC
- Operating voltage type: Direct current
- Battery capacity [Ah]: 1.3
- Width [mm]: 135
- Height [mm]: 105
- Depth [mm]: 50
- Packing width: 123
- Packing height: 68
- Packing depth/length: 188
- Packing weight: 1.324
- Freight forwarding articles: No
- GTIN: 4062434006092
- Customs tariff number: 85072080
- Garantie: -

Accessories

Item no.	Description
178393	KITFIXBATT Mounting set for battery backup in the control housing